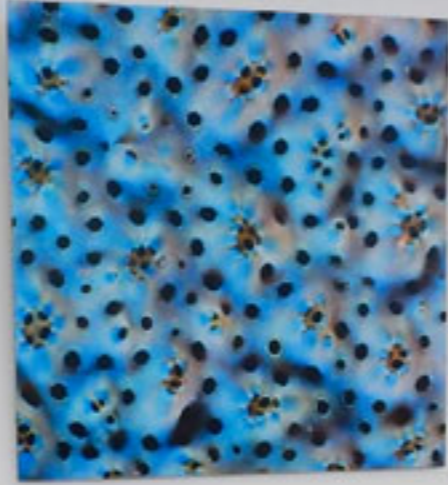




Microscopic image showing a dense field of red, elongated biological structures, possibly cilia or flagella, against a dark background.



Microscopic image of a blue, porous biological tissue with numerous dark, circular spots scattered throughout, possibly representing nuclei or specific cellular components.



Microscopic image of a red, fibrous biological tissue with a complex, interconnected network of fibers, possibly representing connective tissue or muscle fibers.



Microscopic image showing a pattern of yellow, star-shaped or radiating biological structures against a dark background, possibly representing a specific type of cell or tissue.

Microscopic image showing a pattern of yellow, star-shaped or radiating biological structures against a dark background, possibly representing a specific type of cell or tissue.





Small white label with illegible text.





Small white label with illegible text.



Small white label with illegible text.









STATION



